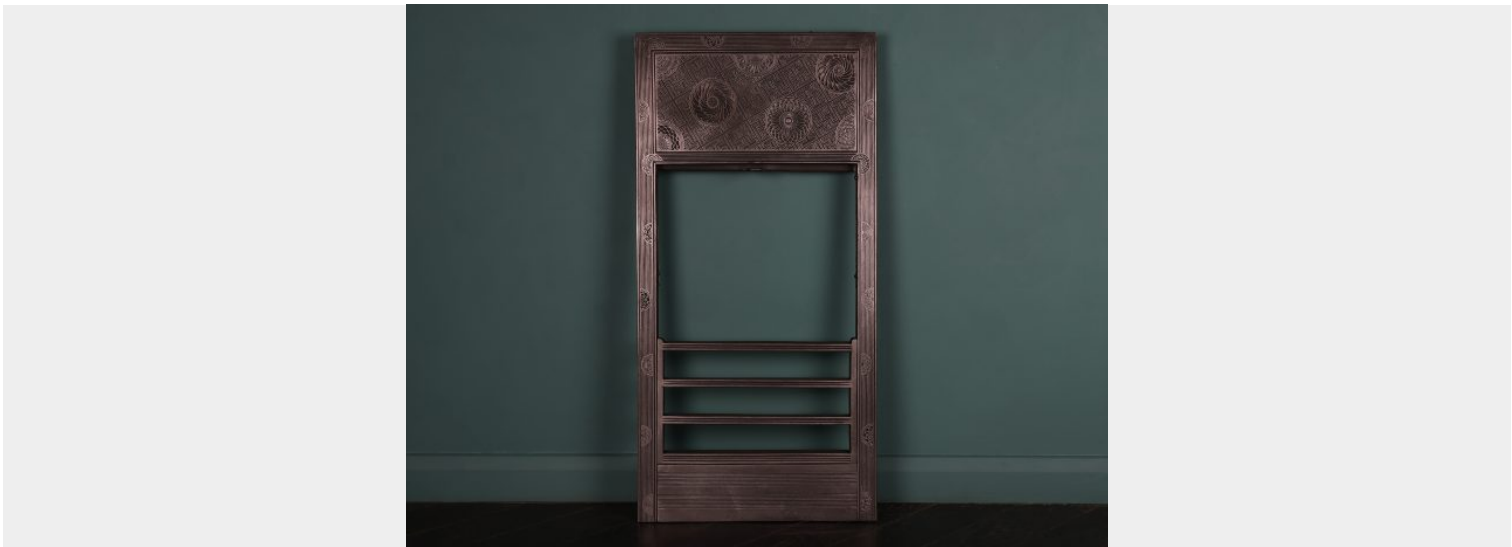


THOMAS JECKYLL REGISTER GRATE



A Thomas Jeckyll register grate finished in black iron. From the foundry of Barnard, Bishop and Barnard, this register represents the very highest quality in fine casting. This asymmetric floral design is typical of Jeckyll and gives a hand-built character to this early mass production technique.
Flat-fronted black-iron register grate with working guillotine drafting mechanism. Restored.
Circa 1870

SKU: EB23120 | Category: [Antique Full & Half Register Grates](#) |

ADDITIONAL INFORMATION

| | |
|--------------|--------|
| Width (ins) | 17 5/8 |
| Height (ins) | 36 1/8 |
| Depth (ins) | 1 1/2 |

589 Wandsworth Road, London SW8 3JD T: +44 (0)20 7720 2660
www.gibilarodesign.com E: info@gibilarodesign.co.uk